



THE WORLD'S LEADING MANUFACTURER OF  
LABEL DISPENSERS, REWINDERS, UNWINDERS,  
SLITTERS & COUNTING SOLUTIONS.

LABELMATE's mission is to make **label printing processes easier, faster and more effective** by **developing smart and durable devices** that **support** their operator **before, during or after** the **printing or application process**.

The most **easy-to-use, heavy-duty, and reliable products** of their kind, every LABELMATE Product is built to rugged **industrial-quality standards**. Our **product quality** is reflected in the unmatched **warranty program of 2 years Limited Warranty**.

While others copy, we innovate. We offer you the most **innovative, complete and reliable product portfolio available** on the **market**.

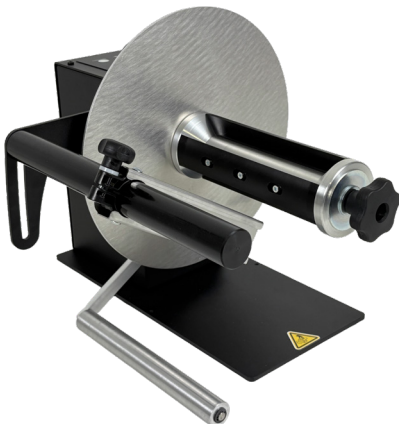
---

## Label Rewinders

Rewinders are efficient time savers that **rewind material into clean and uniform rolls**.

Label rewinders wind up labels into a roll as they come out of a printer. A rewinder is much more **convenient and saves you time**.

MINI-CAT | CAT-3/40G | UNI-CAT | ZCAT | TWIN-CAT-2



---

## Label Unwinders

Label unwinders provide a convenient way to **manage your supply roll of labels** as it feeds into a printer. The supply roll of labels does not have to be refreshed as often, **saving time and adding convenience**.

External label rolls are always visible, making it easy to monitor the status of your label supply.

UCAT | UNI-CAT

## Counting Solutions



Label counters provide a quick and easy way to **count the number of labels on a roll**. Off-Line counting can be done with either a **counting package** or a self contained **reel-to-reel unit**.

Both units allow you to count the number of labels on a given roll, make large rolls of labels into smaller ones, change the direction of the labels coming off the roll or change to a different core size.

COUNT | RRC-330

## Slitting Solutions

Label slitters are a quick and easy way to produce much faster high quantities of smaller labels as you can print **multiple-across label rolls** and then slit them into separate, individual label rolls.



SR | UNIVERSAL SLITTER | SLIT-DELUXE-STATION

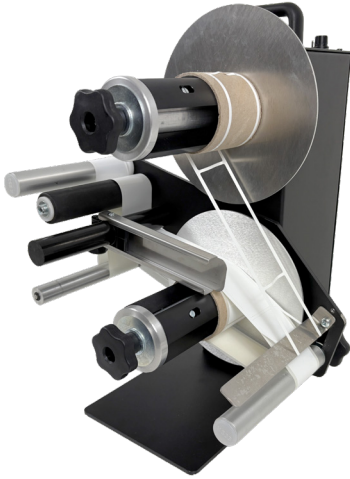
## Printing Solutions

The LABELMATE PM-300 is a versatile, **high-performance printing mechanism** designed to **integrate** seamlessly with a wide range of **hardware components**.

Whether paired with **inkjet heads, laser encoders, barcode verifiers, or RFID modules**, it delivers the flexibility needed for advanced variable data printing applications, a powerful foundation for efficient, high-volume production environments.

PM





## Matrix Removal

The smartest way to **seperate waste matrix from labels**. Either as an off-line station combined with an unwinder or directly in-line with your (colour)label printer.

The long tension arm creates a loop of labels to support the backfeeding process from your colour printer.

TWIN-MATRIX

## Label Dispensers

From iconic to innovative – meet the next generation of our label dispensers!

Label dispensers are a quick and easy way to **dispense individual labels**. They use a peel and present design: as the material passes through the dispenser, the label is peeled away from the backing material and presented at the front of the unit.

### What's new?

- Movable sensor for full flexibility
- Precision Guaranteed:  
Media-Guide included
- Optimized Performance:  
Linear speed control
- User-Friendly: Easy take-up mechanism
- ...

LD



+32 2 375 69 60 | [brussels@labelmate.com](mailto:brussels@labelmate.com) | [www.labelmate.com](http://www.labelmate.com)

Bergensesteenweg 78 - 1651 Lot - Belgium

follow us on: [in](#) [f](#) [@](#) [v](#) [v](#)